

The Morgan

Where Urban Meets Suburban
Your Home...Your way!



4



3



2

2-STORY
STYLE HOME

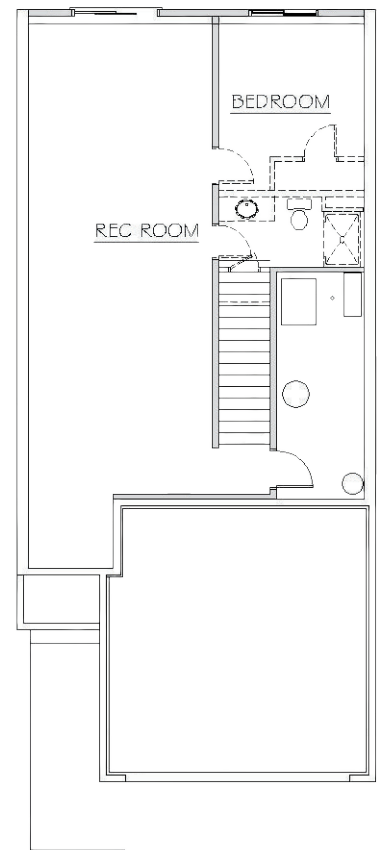
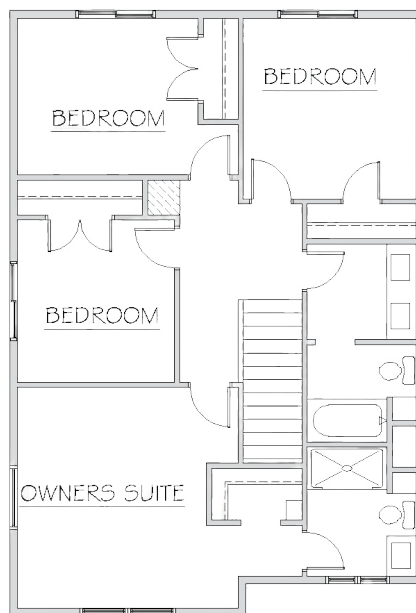
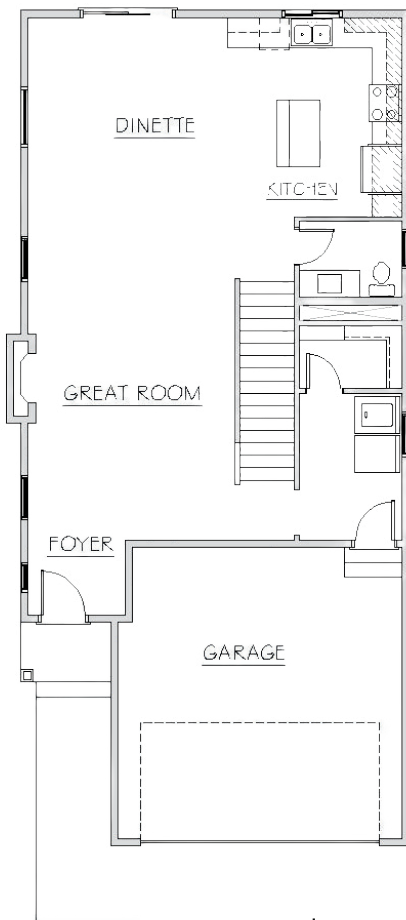
1,940 FINISHED
SQ FT

UNFINISHED
LOWER LEVEL

MAIN LEVEL

UPPER LEVEL

LOWER LEVEL



For more information on Peltier Reserve
please visit our website www.FieldstoneFamilyHomes.com
or scan the QR code for a direct link.



Home and community information including but not limited to pricing, plans, features, availability, amenities are all subject to change prior to sale at any time without notice or obligation. Pictures, colors, features, plans and sizes are for illustration purposes only and may vary from homes as built. All dimensions are approximate. Fieldstone Family Homes, Inc has no control or responsibility as to school changes or assignments, buyer should investigate. Photography, videos and plans are all intellectual property of ©2008 Fieldstone Family Homes, Inc. All homes are constructed by Fieldstone Family Homes, Inc- MN Lic: BC631164, WI Lic: DC-070800080



CONTACT DETAILS

- 952-469-8800
- FieldstoneFamilyHomes.com
- Info@FieldstoneFamilyHomes.com



- 952-985-7253
- FieldstoneRES.com
- Info@FieldstoneRES.com

801 Cliff Rd E; Suite 135 Burnsville, MN 55337